

Instrument Transformers

Product Guide

Instrument Transformers

Yokogawa Current Transformers



2241



2241

Yokogawa Current Transformers	2241	2242	2243
Primary Rating	10-1500A	10-1500A	0.5-100A
Secondary Rating	5A	5A	5A
Rated Burden	15VA	15VA	15VA
Max. Ratio Error	±0.2%	±0.2%	±0.1%
Max. Phase Displacement	±10 minutes	±10 minutes	±5 minutes
Max. Line Voltage	3450V	6900V	250V
Rated Frequency	50-60 Hz		
Dimensions	12.5" x 9.75" x 5"	13.75" x 10.5" x 6"	13.5" x 10.5" x 5.5"
Weight	19.8 lbs	24.3 lbs	26.4 lbs

*includes only the Current Transformer



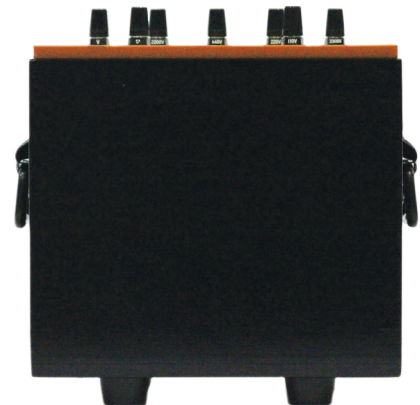
Yokogawa Potential Transformers

Yokogawa Potential Transformers	2261			2262
Primary Rating	220-3300V	15-75V	100-500V	3300-6600V
Secondary Rating	110V	150V	150V	110V
Rated Burden	15VA	15VA	15VA	15VA
Max. Ratio Error	±0.2%	±0.2%	±0.2%	±0.2%
Max. Phase Displacement	±10 minutes	±10 minutes	±10 minutes	±10 minutes
Rated Frequency	50-60 Hz			
Dimensions	10" x 9.5" x 8"			11.5" x 9.5" x 8"
Weight	38.9 lbs			38.9 lbs

*includes only the Potential Transformer



2261



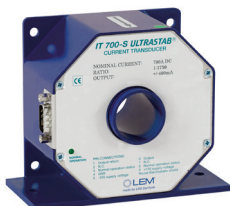
2261

Instrument Transformers

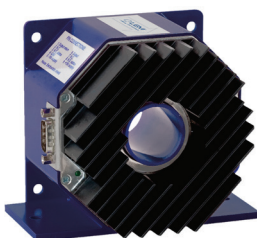
LEM IT Series



IT-400-S



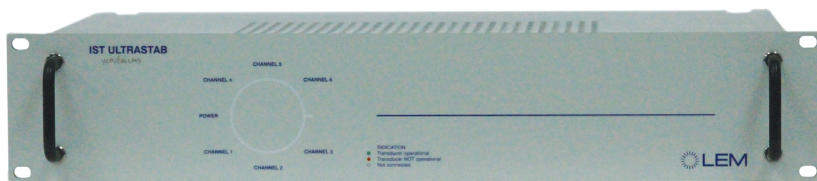
IT-700-S



IT-1000-S

LEM IT-series Current Transducer	IT 60-S	IT 200-S	IT 400-S	IT 700-S	IT 700-SPR	IT 1000-S
Primary Current (peak or dc)	±60A	±200A	±400A	±700A	±700A	±1000A
Primary Current (RMS)	42A	141A	282A	495A	495A	707A
Current Transfer Ratio	600/1	1000/1	2000/1	1750/1	1750/1	1000/1
Output Current	100mA	200mA	200mA	400mA	400mA	1A
Basic Accuracy	0.05% of Full Scale	0.05% of Full Scale	0.05% of Full Scale	0.05% of Full Scale	0.05% of Full Scale	0.05% of Full Scale
Bandwidth (±3 dB)	DC to 800kHz	DC to 500kHz	DC to 500kHz	DC to 100kHz	DC to 100kHz	DC to 500kHz
Programmability	No	No	No	No	Yes/80A min 10A steps	No
Power Supply Voltage	±15V DC	±15V DC	±15V DC	±15V DC	±15V DC	±15V DC
ϵ_L Linearity Error (ppm)	<20	<3	<3	<3	<3	<3
DC Offset (ppm)	<250	<80	<40	<50	<50	<50
Busbar Aperture (mm)	26	26	26	30	30	30

*includes one Power Supply for all CT Heads and one D-Sub Cable for each CT Head
 †Measurement Leads (758933/758917) and Fork Terminal Adapters (758921) are optional



CT Power Supply

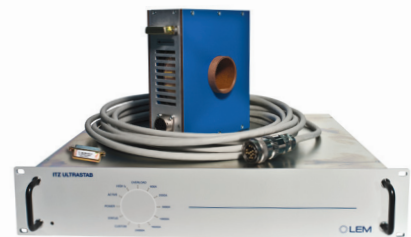
LEM ITZ Series

LEM ITZ series Current Transducer	ITZ 600-SPR	ITZ-2000-SPR	ITZ 5000-S
Primary Range (peak or dc)	±600A	±2000A	±5000A
Primary Current (RMS)	424A	1414A	3535A
Current Transfer Ratio	600/1	2000/1	2500/1
Output Current	1A	1A	2A
Basic Accuracy	0.02% of Full Scale	0.02% of Full Scale	0.02% of Full Scale
Bandwidth (±3 dB)	DC to 500kHz	DC to 80kHz	DC to 80kHz
Programmability	Yes/ 40A min 20A steps	Yes/125A min 125A steps	No
Power Supply Voltage	100-240V AC - 50/60Hz	100-240V AC - 50/60Hz	100-240V AC - 50/60Hz
ϵ_L Linearity (ppm)	<1	<2	<3
DC Offset	<2	<2	<2
Busbar Aperture (mm)	25.4	50	140.3

*includes one Power Supply and one D-Sub Cable for each CT Head
 †Measurement Leads (758933/758917) and Fork Terminal Adapters (758921) are optional



ITZ-600-S



ITZ-2000-SPR



ITZ-5000-S

Instrument Transformers

AEMC Clamp-on CTs

AEMC Clamp-on CTs	SR601	SR632	SR651	SR661	SR701	MR461	MR561	SL261	JM810A
Nominal Range	1000A	1000A	1000A	20Apk, 200Apk, 2000Apk	1000A	40AAC/ 60AADC & 400AAC/ 600ADC	100aAC/ 150ADC & 1000AAC/ 1500ADC	10A & 100A	2000A
Measurement Range	0.1 to 1200A	0.1 to 1200 A	0.1 to 1200 A	0.1 to 2000Apk	1mA to 1200A	0.2 to 600A	0.2 to 1500A	100mA to 100A	1 to 2400A
Transformation Ratio	1000:1	1000:5	Voltage Output	Voltage Output	1000:1	Voltage Output	Voltage Output	Voltage Output	2000:2
Output Signal	1mA/AAC: (1AAC @ 1000A)	5mAAC/AAC: (5AAC @ 1000A)	1mV/AAC/AA C (1 VAC @ 1000A)	100mV/A: 10mA to 20A Peak; 10mV/A; 0.1A to 200A Peak; 1mV/A: 1A to 2000A Peak	1mA/AAC (1AAC @ 1000A)	40A: 10mV/A 400A: 1mV/A	150: 10mV/A 1500A: 1mV/A	10A: 100mV/A 100A: 10mV/A	1mAAC/AAC (2A @ 2000A)
Accuracy (Full Scale)	0.5% of Reading	1% of Reading	0.5% of Reading	0.5% of Reading	≤0.3% of Reading	1.5% of Reading (60ADC Range), 1.5% of Reading ± 1A	1.5% of Reading (150ADC Range), 1.5% of Reading ± 1A (1500ADC Range)	3% of Reading ± 50mA	0.5% of Reading
Phase Shift (Full Scale)	0.5°	1°	0.5°	0.5°	≤0.7°	≤3.0°(60 A Range), ≤2.5°(600A Range)	≤3.0°(150 A Range), ≤2.5°(1500A Range)	to 65Hz 1.5°	0.5°
Frequency Range	30 Hz to 5kHz	30Hz to 5kHz	30Hz to 5kHz	1Hz to 100kHz (@ -3dB)	30Hz to 5kHz	DC to 10kHz @ -3dB	DC to 10kHz @ -3dB	DC to 10kHz @ -3dB	30Hz to 5kHz
Load Impedance	5Ω max	0.6Ω max	100kΩ min	1MΩ @ 47 pF	5Ω max	>100kΩ max/ 100pF max	>100kΩ max/ 100pF max	>1MΩ /100pF	≤1Ω
Common Mode Voltage	600 V Cat. III	600 V Cat. III	600 V Cat. III	600 V Cat. III	600 V Cat. III	600Vrms	600Vrms	600 Vrms	600VAC
Output Termination	Jack	5 ft Lead	Jack	6.5 ft BNC	Jack	6ft BNC	6ft BNC	6.5 ft coaxial cable	5ft Lead

*includes only the Clamp-on CT
†Measurement Leads (758933/758917) and Conversion Adapters (758924) are optional



SR601



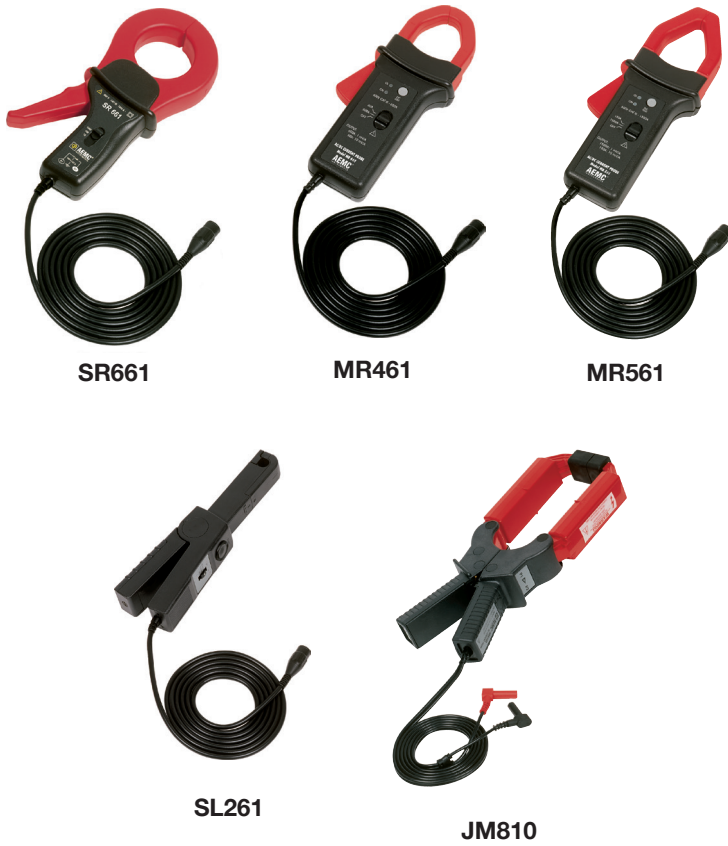
SR632



SR651



SR701



Ram Meter Shunts

Ram Meter Shunts			
Primary Rating (A Peak)	25/30/35/ 40/50/60/75/ 100/150/200	250/300/ 400/500	25/50/75/100/ 150/200/250/ 300/400/500
Secondary Rating	50 DCmV		
Accuracy	0.33%		0.10%
Dimensions	1.5" x 5.25" x 1.25"	4" x 10" x 2"	1.5" x 8" x 1.7"

*includes only the Shunt



Ram Meter Shunt



Yokogawa CTs & PTs		
Models	Yokogawa Part #	Description
2241	224100	CT 10A-1.5KA/5A 3450 V
2242	224200	CT 10A-1.5KA/5A 6900 V
2243	224300	CT .5A-100A/5A for Portable 250V
2261	226101	PT 220-3300V/110V for Portable
	226102	PT 15-75V/150V for Portable
	226103	PT 100-500V/150V for Portable
2262	226200	PT 3300-6600V/110V for Portable

YCA/AEMC Clamp-on CTs		
Models	Yokogawa Part #	Description
SR601	B9017RZ	Clamp-on CT 1000:1 Amp, 5 KHz, 0.5%
SR632	B9017ZQ	Clamp-on CT 1000: 5 Amp, 10 KHz, 1%
SR651	B9017ZR	Clamp-on CT 1000: 1 mv/A 5 KHz, 0.5%
SR661	B9017SA	Clamp-on CT 2000A Pk, 1mv/A 100KHz, 1%
SR701	M1223QP-A	Clamp-on CT 1000:1Amp 5KHz, 0.3%
MR461	B9017QN	40/400A AC/DC, 10/1 mV/A, 1.5/2.5%
MR561	B9017VW	100/1000 A AC/DC, 10/1 mV/A, 2.5/4%
SL261	B9017TR	10 A/100 A Pk AC/DC, 100/10 mV/A
JM810A	M1114CC	Clamp-on CT 2000:2 AAC 5KHz, 0.5%

RAM Meter Shunts		
Models	Yokogawa Part #	Description
25A/50mV	B9017UH	25 Amp 50 mV Shunt, 0.33%, 1.5" W x 5.25" L x 1.25" H
	B9017XJ	25 Amp 50 mV Shunt, 0.1% 1.5" W x 8.0" L x 1.7" H
30A/50mV	B9017UJ	30 Amp 50 mV Shunt, 0.33%, 1.5" W x 5.25" L x 1.25" H
35A/50mV	1W-B9017UK	35 Amp 50 mV Shunt, 0.33%, 1.5" W x 5.25" L x 1.25" H
40A/50mV	1W-B9017UL	40 Amp 50 mV Shunt, 0.33%, 1.5" W x 5.25" L x 1.25" H
50A/50mV	B9017UM	50 Amp 50 mV Shunt, 0.33%, 1.5" W x 5.25" L x 1.25" H
	B9017XK	50 Amp 50 mV Shunt, 0.1% 1.5" W x 8.0" L x 1.7" H
60A/50mV	1W-B9017UN	60 Amp 50 mV Shunt, 0.33%, 1.5" W x 5.25" L x 1.25" H
75A/50mV	B9017UP	75 Amp 50 mV Shunt, 0.33%, 1.5" W x 5.25" L x 1.25" H
	B9017XS	75 Amp 50 mV Shunt, 0.1% 1.5" W x 8.0" L x 1.7" H
100A/50mV	B9017UQ	100 Amp 50 mV Shunt, 0.33%, 1.5" W x 5.25" L x 1.25" H
	B9017XT	100 Amp 50 mV Shunt, 0.1% 1.5" W x 8.0" L x 1.7 inch" H
150A/50mV	B9017UR	150 Amp 50 mV Shunt, 0.33%, 1.5" W x 5.25" L x 1.25" H
	B9017YP	150 Amp 50 mV Shunt, 0.1% 1.5" W x 8.0" L x 1.7" H
200A/50mV	B9017US	200 Amp 50 mV Shunt, 0.33%, 1.5" W x 6.25" L x 1.5" H
	B9017XV	200 Amp 50 mV Shunt, 0.1% 1.5" W x 8.0" L x 1.7" H
250A/50mV	B9017UT	250 Amp 50 mV Shunt, 0.33%, 4.0" x 10.0" L x 2.0" H
	B9017XW	250 Amp 50 mV Shunt, 0.1% 1.5" W x 8.0" L x 1.7" H
300A/50mV	B9017UU	300 Amp 50 mV Shunt, 0.33%, 4.0" x 10.0" L x 2.0" H
	B9017XX	300 Amp 50 mV Shunt, 0.1% 1.5" W x 8.0" L x 1.7" H
400A/50mV	B9017UV	400 Amp 50 mV Shunt, 0.33%, 4.0" x 10.0" L x 2.0" H
	B9017XY	400 Amp 50 mV Shunt, 0.1% 1.5" W x 8.0" L x 1.7" H
500A/50mV	B9017UW	500 Amp 50 mV Shunt, 0.33%, 4.0" x 10.0" L x 2.0" H
	B9017XZ	500 Amp 50 mV Shunt, 0.1% 1.5" W x 8.0" L x 1.7" H

Yokogawa/LEM CTs		
Models	Yokogawa Part #	Description
IT 60-S	M1114DP	IT 60-S IST System with 1 IT 60-S CT
	M1114DQ	IT 60-S IST System with 2 IT 60-S CTs
	M1114DR	IT 60-S IST System with 3 IT 60-S CTs
	M1114DS	IT 60-S IST System with 4 IT 60-S CTs
	M1114DT	IT 60-S IST System with 5 IT 60-S CTs
IT 200-S	M1114DU	IT 60-S IST System with 6 IT 60-S CTs
	M1114BA	IT 200-S IST System with 1 IT 200-S CT
	M1114BB	IT 200-S IST System with 2 IT 200-S CTs
	M1114BC	IT 200-S IST System with 3 IT 200-S CTs
	M1114BD	IT 200-S IST System with 4 IT 200-S CTs
IT 400-S	M1114BE	IT 200-S IST System with 5 IT 200-S CTs
	M1114BF	IT 200-S IST System with 6 IT 200-S CTs
	M1223QZ-A	IT 400-S IST System with 1 IT 400-S CTs
	M1223RA-A	IT 400-S IST System with 2 IT 400-S CTs
	M1223RB-A	IT 400-S IST System with 3 IT 400-S CTs
IT 700-S	M1223RC-A	IT 400-S IST System with 4 IT 400-S CTs
	M1223RD-A	IT 400-S IST System with 5 IT 400-S CTs
	M1223RE-A	IT 400-S IST System with 6 IT 400-S CTs
	M1114BG	IT 700-S IST System with 1 IT 700-S CT
	M1114BH	IT 700-S IST System with 2 IT 700-S CTs
IT 700-SPR	M1114BJ	IT 700-S IST System with 3 IT 700-S CTs
	M1114BK	IT 700-S IST System with 4 IT 700-S CTs
	M1114BL	IT 700-S IST System with 5 IT 700-S CTs
	M1114BM	IT 700-S IST System with 6 IT 700-S CTs
	M1114BN	IT 700-SPR IST System with 1 IT 700-SPR CT (700 A Rng Plg)
IT 1000-S	M1114BP	IT 700-SPR IST System w/ 2 IT 700-SPR CTs (700A Rng Plg)
	M1114BQ	IT 700-SPR IST System w/ 3 IT 700-SPR CTs (700A Rng Plg)
	M1114BR	IT 700-SPR IST System w/ 4 IT 700-SPR CTs (700A Rng Plg)
	M1114BS	IT 700-SPR IST System w/ 5 IT 700-SPR CTs (700A Rng Plg)
	M1114BT	IT 700-SPR IST System w/ 6 IT 700-SPR CTs (700A Rng Plg)
ITZ 600-SPR	M1114BU	IT 1000-S IST System with 1 IT 1000-S CT
	M1114BV	IT 1000-S IST System with 2 IT 1000-S CTs
	M1114BW	IT 1000-S IST System with 3 IT 1000-S CTs
	M1114BX	IT 1000-S IST System with 4 IT 1000-S CTs
	M1114BY	IT 1000-S IST System with 5 IT 1000-S CTs
ITZ 2000-SPR	M1114CA	IT 1000-S IST System with 6 IT 1000-S CTs
	M1114DL	ITZ 600-SPR, 600 Amp Pk, Programmable, 0.02% FS
ITZ 5000-S	M1114DM	ITZ 2000-SPR, 2000 Amp Pk, Programmable, 0.02% FS
	M1114DN	ITZ 5000-S, 5000 Amp Pk, Non-Programmable, 0.02% FS

About Us

Since its foundation in 1915, Yokogawa has been recognized as a technology leader. Annually, Yokogawa reinvests nearly a quarter billion dollars in research and development, much of it aimed at core technologies like test and measurement. As a result, Yokogawa's annual corporate revenues have grown to nearly \$4 Billion while amassing more than 6,000 patents and registrations. All of us within the Test and Measurement Division recognize it as our mission to continuously develop and supply the best possible solutions with optimum quality and value to customers and society, thereby contributing to our customer's growth.